





THIS BOOK BELONGS TO:

COMPANY NAME:

USER ID:

PASSWORD:

* You will need your username and password
when ordering online at lunatikathletiks.com



Lunatik Athletiks

We are a Canadian “Designer Compression” company in the medical and athletic market.

Our Passion Statement

Together, we are committed to designing fabulous, bespoke compression to share your unique personality. Our intention is to have you feel rejuvenated and ready to conquer your next journey!

Our Core Intentions

- Performance With Personality
- Meticulous Quality
- Allow Self –Expression
- Environmentally Thoughtful
- Always Authentic



ACHI+
by LUNATIK ATHLETIKS





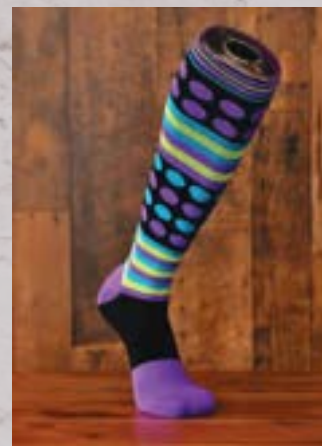


15-22mmHG



ROCKIN' DOT





DESIGN STYLE: **ROCKIN' DOT**

INSPIRATION:
Socks ROCK!

Fabric content:
75% NYLON 25% LYCRA

CODE:	ACHI	DESIGN	LENGTH
	1	RD	C
	15-22 mmHg	Rockin' Dot	Calf

SIZE (See Section C for details of your ACHI size chart)

S

Small

M

Medium

L

Large

XL

X-Large

FEATURES AND BENEFITS

- Reduces the build up of lactic acid and helps muscle recovery.
- Provides relief from tired, aching legs.
- Helps aid in the prevention of spider veins and swelling.
- Ideal for prolonged standing, sitting and long distance travel.
- Greater endurance by reducing muscle vibration and soreness.

A-1



CHAKRA SOCK



DESIGN STYLE: **CHAKRA SOCK**

INSPIRATION:
The Power of the Chakras

Fabric content:
75% NYLON 25% LYCRA

CODE:	ACHI	DESIGN	LENGTH
	1	CS	C
	15-22 mmHg	Chakra Sock	Calf

SIZE (See Section C for details of your ACHI size chart)

S	M	L	XL
Small	Medium	Large	X-Large

FEATURES AND BENEFITS

- Reduces the build up of lactic acid and helps muscle recovery.
- Provides relief from tired, aching legs.
- Helps aid in the prevention of spider veins and swelling.
- Ideal for prolonged standing, sitting and long distance travel.
- Greater endurance by reducing muscle vibration and soreness.



MONO TECH



DESIGN STYLE: **MONO TECH**

INSPIRATION:
Strength of a single wavelength!

Fabric content:
75% NYLON 25% LYCRA

CODE:	ACHI	DESIGN	LENGTH
	1	MT	C
	15-22 mmHg	Mono Tech	Calf

SIZE (See Section C for details of your ACHI size chart)

S	M	L	XL
Small	Medium	Large	X-Large

FEATURES AND BENEFITS

- Reduces the build up of lactic acid and helps muscle recovery.
- Provides relief from tired, aching legs.
- Helps aid in the prevention of spider veins and swelling.
- Ideal for prolonged standing, sitting and long distance travel.
- Greater endurance by reducing muscle vibration and soreness.

URBANE STRIPE





DESIGN STYLE: **URBANE STRIPE**

INSPIRATION:
Keep it Urbane!

Fabric content:
75% NYLON 25% LYCRA

	ACHI	DESIGN	LENGTH
CODE:	1	US	C
	15-22 mmHg	Urbane Stripe	Calf

SIZE (See Section C for details of your ACHI size chart)

S	M	L	XL
Small	Medium	Large	X-Large

FEATURES AND BENEFITS

- Reduces the build up of lactic acid and helps muscle recovery.
- Provides relief from tired, aching legs.
- Helps aid in the prevention of spider veins and swelling.
- Ideal for prolonged standing, sitting and long distance travel.
- Greater endurance by reducing muscle vibration and soreness.



CLASSIC PERFORMANCE



DESIGN STYLE: **CLASSIC PERFORMANCE**

INSPIRATION:

Classic style and premium performance.

Fabric content:

75% NYLON 25% LYCRA

	ACHI	DESIGN	LENGTH
CODE:	1	CP	C
	15-22mmHg	Classic Performance	Calf

SIZE (See Section C for details of your ACHI size chart)

S

Small

M

Medium

L

Large

XL

X-Large

FEATURES AND BENEFITS

- Reduces the build up of lactic acid and helps muscle recovery.
- Provides relief from tired, aching legs.
- Helps aid in the prevention of spider veins and swelling.
- Ideal for prolonged standing, sitting, and long distance travel.
- Greater endurance by reducing muscle vibration and soreness.

WORK IT





DESIGN STYLE: **WORK IT**

INSPIRATION:

Is it worth it? Let me 'Work It'.

Fabric content:

16% MERINO WOOL 13% LYCRA 41% ACRYLIC 30% NYLON

	ACHI	DESIGN	LENGTH
CODE:	1	1WI	C
	15-22mmHg	Work It	Calf
SIZE	(See Section C for details of your ACHI size chart)		
	S	M	L
	Small	Medium	Large
			XL
			X-Large

FEATURES AND BENEFITS

- Reduces the build up of lactic acid and helps muscle recovery.
- Provides relief from tired, aching legs.
- Helps aid in the prevention of spider veins and swelling.
- Ideal for prolonged standing, sitting, and long distance travel.
- Greater endurance by reducing muscle vibration and soreness.

BENEFITS OF MERINO WOOL:

- Breathability and moisture management.
- Natural heating and cooling.
- Sweat wicking.
- Strength and resilience.
- Quick drying.
- Padded comfort foot.
- Odour resistance.

SALT AND PEPPA





DESIGN STYLE: **SALT AND PEPPA**

INSPIRATION:

Coolin' by day then at night working up a sweat.

Fabric content:

43% COTTON 41% NYLON 16%LYCRA

CODE:	ACHI	DESIGN	LENGTH
	1	SP	C
	15-22mmHg	Salt and Peppa	Calf

SIZE (See Section C for details of your ACHI size chart)

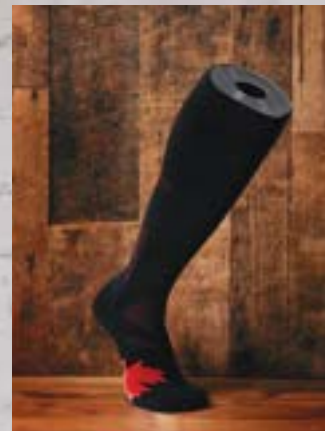
S	M	L	XL
Small	Medium	Large	X-Large

FEATURES AND BENEFITS

- Soft cotton fibers provide natural, breathable, hypoallergenic compression.
- Reduces the buildup of lactic acid and helps muscle recovery.
- Provides relief from tired, aching legs.
- Helps aid in the prevention of spider veins and swelling.
- Ideal for prolonged standing, sitting, and long distance travel.
- Greater endurance by reducing muscle vibration and soreness.



STRONG AND FREE



DESIGN STYLE: **STRONG AND FREE**

INSPIRATION:
Proudly Canadian!

Fabric content:
76% NYLON 13% LYCRA 11% MICROFIBER

	ACHI	DESIGN	LENGTH
CODE:	1	SF	C
	15-22mmHg	Strong and Free	Calf

SIZE (See Section C for details of your ACHI size chart)

S
Small

M
Medium

L
Large

XL
X-Large

FEATURES AND BENEFITS

- Reduces the build up lactic acid and helps muscle recovery
- Provides relief from tired, aching legs
- Helps aid in the prevention of spider veins and swelling
- Ideal for prolonged standing, sitting, and long distance travel
- Greater endurance by reducing muscle vibration and soreness
- Supreme moisture wicking
- Temperature regulation
- Innovative Ventilation Channels
- Specially designed front and ankle crease
- Achilles and Arch support



PROPEL ELITE



DESIGN STYLE: **PROPEL ELITE**

INSPIRATION:
MOVING YOUR PERFORMANCE FORWARD

Fabric content:
76% NYLON 13% LYCRA 11% MICROFIBER

	ACHI	DESIGN	LENGTH
CODE:	1	PE	C
	15-22mmHg	Propel Elite	Calf

SIZE (See Section C for details of your ACHI size chart)

S

Small

M

Medium

L

Large

XL

X-Large

FEATURES AND BENEFITS

- Reduces the build up lactic acid and helps muscle recovery
- Provides relief from tired, aching legs
- Helps aid in the prevention of spider veins and swelling
- Ideal for prolonged standing, sitting, and long distance travel.
- Greater endurance by reducing muscle vibration and soreness
- Supreme moisture wicking
- Temperature regulation
- Innovative Ventilation Channels
- Specially designed front and ankle crease
- Achilles and Arch support



LUMBER JACK



DESIGN STYLE: **LUMBER JACK**

INSPIRATION:
Proudly Canadian

Fabric content:
3% Merino Wool 16% Acrylic 69% Nylon 12% Lycra

	ACHI	DESIGN	LENGTH
CODE:	1	LJ	C
	15-22 mmHg	Lumberjack	Calf

SIZE (See Section C for details of your ACHI size chart)

S

Small

M

Medium

L

Large

XL

X-Large

FEATURES AND BENEFITS

- Reduces the build up of lactic acid and helps muscle recovery
- Provides relief from tired, aching legs
- Helps aid in the prevention of spider veins and swelling
- Ideal from prolonged standing, sitting and long distance travel
- Greater endurance by reducing muscle vibration and soreness

BENEFITS OF MERINO WOOL:

- Breathability and moisture management
- Natural heating and cooling
- Sweat wicking
- Strength and resilience
- Quick drying
- Padded comfort foot
- Odour resistance

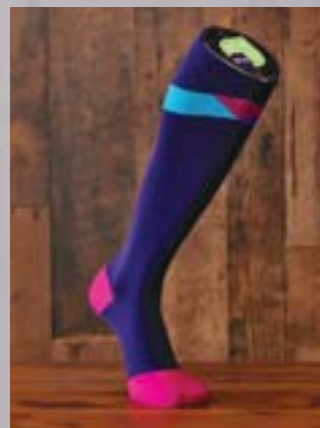




20-30mmHG

SPIRIT INK





DESIGN STYLE: **SPRIT INK**

INSPIRATION:

Express your spirit with rich pigment!

Fabric content:

75% NYLON 25% LYCRA

	ACHI+	DESIGN	LENGTH
CODE:	2	SI	C
	20-30 mmHg	Spirit Ink	Calf

SIZE (See Section C for details of your ACHI+ size chart)

SR ST MR MT LR LT XR XT

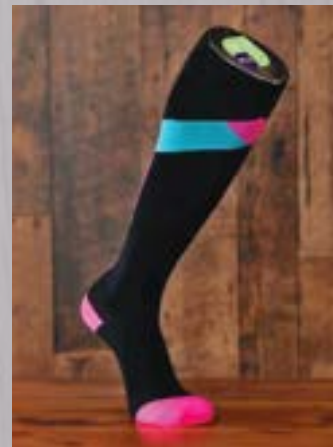
FEATURES AND BENEFITS

- Woven with effective moisture management.
- Regular and tall sizes for a premium fit.
- Durable fabric construction for endurance.
- Comfort wide band to enhance fit.
- Technically designed patterns with bespoke detail.

RETIRING SOON

SPIRITTECH





DESIGN STYLE: **SPRIT TECH**

INSPIRATION:

Body, Mind & Spirit!

Fabric content:

75% NYLON 25% LYCRA

CODE:	ACHI+	DESIGN	LENGTH
	2	ST	C
	20-30mmHg	Spirit Tech	Calf

SIZE (See Section C for details of your ACHI+ size chart)

SR ST MR MT LR LT XR XT

FEATURES AND BENEFITS

- Woven with effective moisture management.
- Regular and tall sizes for a premium fit.
- Durable fabric construction for endurance.
- Comfort wide band to enhance fit.
- Technically designed patterns with bespoke detail.

BLACK VIBE





DESIGN STYLE: **BLACK VIBE**

INSPIRATION:
Catch the Vibe!

Fabric content:
75% NYLON 25% LYCRA

CODE:	ACHI+ 2	DESIGN BV	LENGTH C
	20-30mmHg	Black Vibe	Calf

SIZE (See Section C for details of your ACHI+ size chart)

SR ST MR MT LR LT XR XT

FEATURES AND BENEFITS

- Targeted breathable woven panels.
- Regular and tall sizes for a premium fit.
- Durable fabric construction for endurance.
- Comfort wide band to enhance fit.
- Technically designed patterns with bespoke detail.
- Padded foot with moisture wicking channels.
- Inlaid weave around achilles for increased support.

VIBETECH





DESIGN STYLE: **VIBE TECH**

INSPIRATION:
Catch the Vibe!

Fabric content:
75% NYLON 25% LYCRA

	ACHI+	DESIGN	LENGTH
CODE:	2	VT	C
	20-30mmHg	Vibe Tech	Calf

SIZE (See Section C for details of your ACHI+ size chart)

SR ST MR MT LR LT XR XT

FEATURES AND BENEFITS

- Targeted breathable woven panels.
- Regular and tall sizes for a premium fit.
- Durable fabric construction for endurance.
- Comfort wide band to enhance fit.
- Technically designed patterns with bespoke detail.
- Padded foot with moisture wicking channels.
- Inlaid weave around achilles for increased support.



METRO TECH



DESIGN STYLE: **METRO TECH**

INSPIRATION:

Breath of Fresh Air with a metropolitan designer flare!

Fabric content:

75% NYLON 25% LYCRA

	ACHI+	DESIGN	LENGTH
CODE:	2	MT	C
	20-30 mmHg	Metro Tech	Calf

SIZE (See Section C for details of your ACHI+ size chart)

SR ST MR MT LR LT XR XT

FEATURES AND BENEFITS

- Targeted breathable woven panels.
- Regular and tall sizes for a premium fit.
- Durable fabric construction for endurance.
- Comfort wide band to enhance fit.
- Technically designed patterns with bespoke detail.

RETIRING SOON



BOFA TECH



DESIGN STYLE: **BOFA TECH**

INSPIRATION:

Breath of Fresh Air in your designer pastel!

Fabric content:

75% NYLON 25% LYCRA

CODE:

ACHI+

2

20-30mmHg

DESIGN

BT

BOFA Tech

LENGTH

C

Calf

SIZE (See Section C for details of your ACHI+ size chart)

SR

ST

MR

MT

LR

LT

XR

XT

FEATURES AND BENEFITS

- Woven with effective moisture management.
- Regular and tall sizes for a premium fit.
- Durable fabric construction for endurance.
- Comfort wide band to enhance fit.
- Technically designed patterns with bespoke detail.

DENIM COOL





DESIGN STYLE: **DENIM COOL**

INSPIRATION:

Wear your favourite Denim!

Fabric content:

43% COTTON 16% LYCRA 43% NYLON

CODE:	ACHI+ 2	DESIGN DC	LENGTH C
	20-30mmHg	Denim Cool	Calf

SIZE (See Section C for details of your ACHI+ size chart)



FEATURES AND BENEFITS

- Soft cotton fibers provide natural, breathable, hypoallergenic compression.
- Regular and tall sizes for a premium fit.
- Durable fabric construction for endurance.
- Comfort wide band to enhance fit.
- Technically designed patterns with bespoke detail.

TRENDTECH





DESIGN STYLE: **TREND TECH**

INSPIRATION:

Have a Trendy kinda day!

Fabric content:

75% NYLON 25% LYCRA

	ACHI+	DESIGN	LENGTH
CODE:	2	TT	C
	20-30 mmHg	Trend Tech	Calf

SIZE (See Section C for details of your ACHI+ size chart)

SR ST MR MT LR LT XR XT

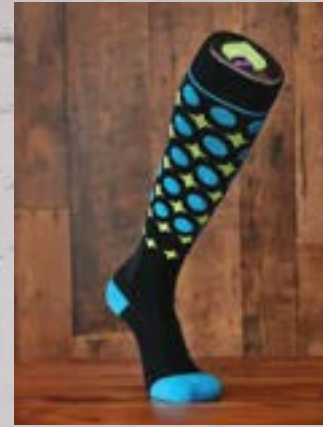
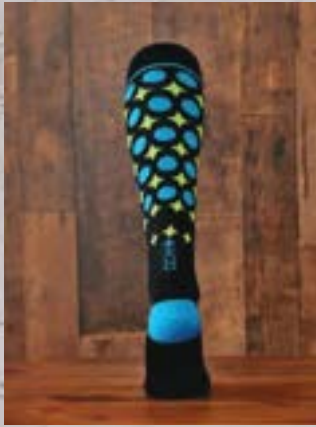
FEATURES AND BENEFITS

- Woven with effective moisture management.
- Regular and tall sizes for a premium fit.
- Durable fabric construction for endurance.
- Comfort wide band to enhance fit.
- Technically designed patterns with bespoke detail.

RETIRING SOON

POWERTECH





DESIGN STYLE: **POWER TECH**

INSPIRATION:

Power to you and your journey!

Fabric content:

75% NYLON 25% LYCRA

CODE:	ACHI+ 2 20-30 mmHg	DESIGN PT Power Tech	LENGTH C Calf
-------	--------------------------	----------------------------	---------------------

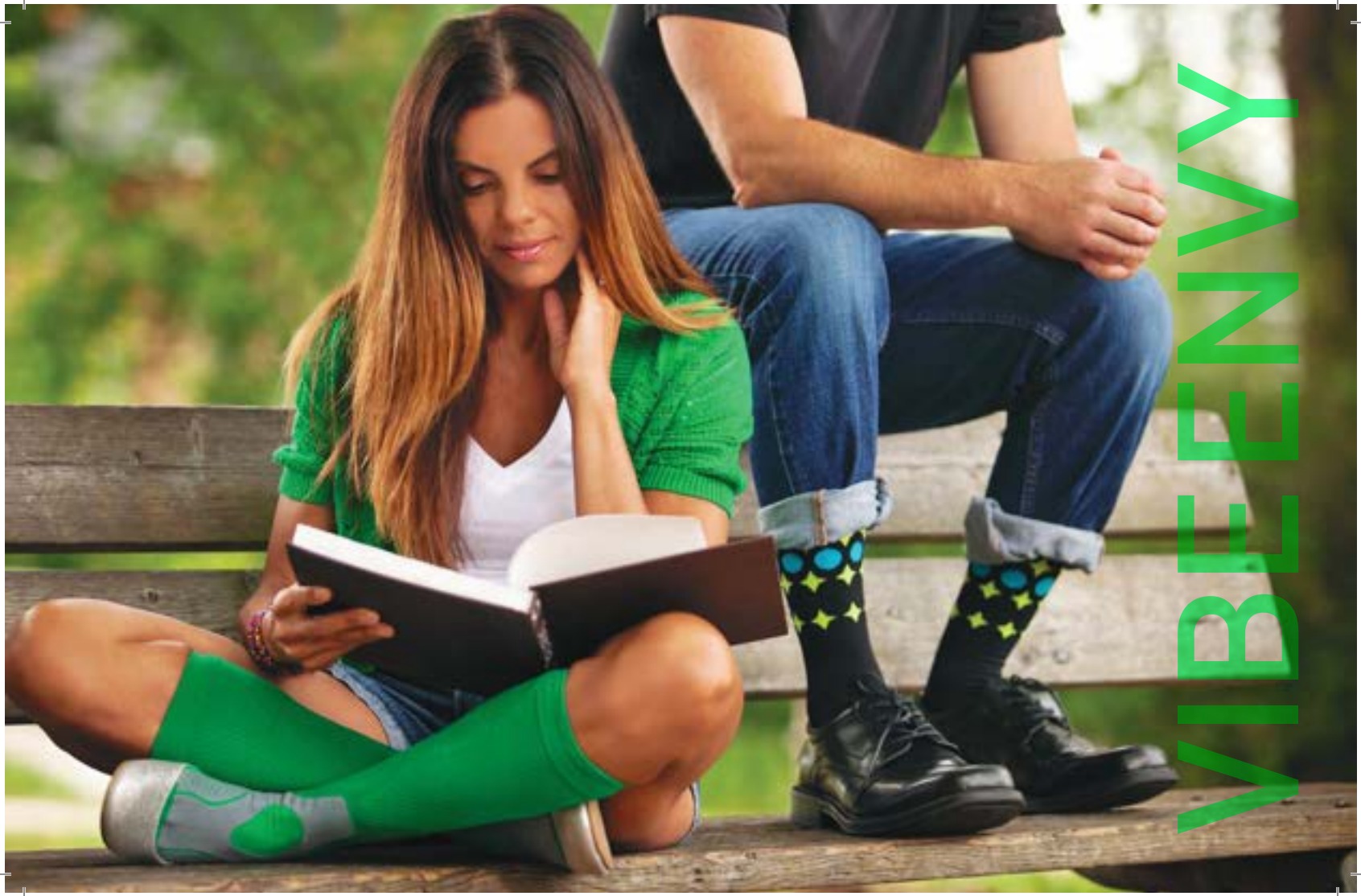
SIZE (See Section C for details of your ACHI+ size chart)

SR ST MR MT LR LT XR XT

FEATURES AND BENEFITS

- Woven with effective moisture management.
- Regular and tall sizes for a premium fit.
- Durable fabric construction for endurance.
- Comfort wide band to enhance fit.
- Technically designed patterns with bespoke detail.

RETIRING SOON



VIBENNY



DESIGN STYLE: **VIBE ENVY**

INSPIRATION:

Green with envy

Fabric content:

75% NYLON 25% LYCRA

	ACHI+	DESIGN	LENGTH
CODE:	2	VE	C
	20-30mmHg	Vibe Envy	Calf

SIZE (See Section C for details of your ACHI+ size chart)

SR ST MR MT LR LT XR XT

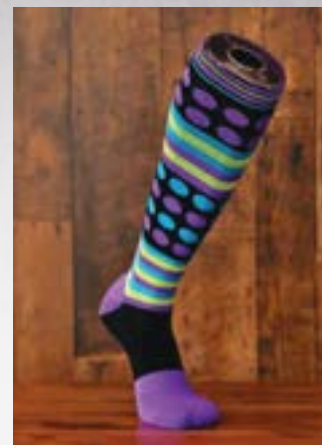
FEATURES AND BENEFITS

- Targeted breathable woven panels.
- Regular and tall sizes for a premium fit.
- Durable fabric construction for endurance.
- Comfort wide band to enhance fit.
- Technically designed patterns with bespoke detail.
- Padded foot with moisture wicking channels.
- Inlaid weave around achilles for increased support.

RETIRING SOON

ROCKIN' DOT+





DESIGN STYLE: **ROCKIN' DOT +**

INSPIRATION:
Socks ROCK!

Fabric content:
75% NYLON 25% LYCRA

	ACHI+	DESIGN	LENGTH
CODE:	2	RD	C
	20-30mmHg	Rockin' Dot +	Calf

SIZE [See Section C for details of your ACHI+ size chart]

SR ST MR MT LR LT XR XT

FEATURES AND BENEFITS

- Woven with effective moisture management.
- Regular and tall sizes for a premium fit.
- Durable fabric construction for endurance.
- Comfort wide band to enhance fit.
- Technically designed patterns with bespoke detail.



HOT ROCKIN' DOT+



DESIGN STYLE: **HOT ROCKIN' DOT**

INSPIRATION:

These socks are Hawt!

Fabric content:

75% NYLON 25% LYCRA

CODE:	ACHI+	DESIGN	LENGTH
	2	HR	C
	20-30 mmHg	Hot Rockin' Dot	Calf

SIZE (See Section C for details of your ACHI+ size chart)

SR ST MR MT LR LT XR XT

FEATURES AND BENEFITS

- Woven with effective moisture management.
- Regular and tall sizes for a premium fit.
- Durable fabric construction for endurance.
- Comfort wide band to enhance fit.
- Technically designed patterns with bespoke detail.

RETIRING SOON



NIGHT RYDER



DESIGN STYLE: **NIGHT RYDER**

INSPIRATION:

Sleek and epic black

Fabric content:

75% NYLON 25% LYCRA

	ACHI+	DESIGN	LENGTH
CODE:	2	NR	C
	20-30 mmHg	Night Ryder	Calf

SIZE (See Section C for details of your ACHI+ size chart)

SR ST MR MT LR LT XR XT

FEATURES AND BENEFITS

- Woven with effective moisture management.
- Regular and tall sizes for a premium fit.
- Durable fabric construction for endurance.
- Technically designed patterns with bespoke detail.
- Extended comfort cuff for a soothing graduated transition along the top.
- Padded foot that comes up to protect the achilles area.

RETIRING SOON

ENERGETIK ARGYLE





DESIGN STYLE: **ENERGETIK ARGYLE**

INSPIRATION:

Classy and Sophisticated

Fabric content:

75% NYLON 25% LYCRA

	ACHI+	DESIGN	LENGTH
CODE:	2	EA	C
	20-30mmHg	Energetik Argyle	Calf

SIZE [See Section C for details of your ACHI+ size chart]

SR

ST

MR

MT

LR

LT

XR

XT

FEATURES AND BENEFITS

- Woven with effective moisture management.
- Regular and tall sizes for a premium fit.
- Durable fabric construction for endurance.
- Comfort wide band to enhance fit.
- Technically designed patterns with bespoke detail.

RETIRING SOON

WORK IT +





DESIGN STYLE: **WORK IT +**

INSPIRATION:

Is it worth it? Let me 'Work It'

Fabric content:

15% MERINO WOOL 40% ACRYLIC 30% NYLON 15% LYCRA

CODE:	ACHI+	DESIGN	LENGTH
	2	WI	C
	20-30mmHg	Work It +	Calf

SIZE (See Section C for details of your ACHI+ size chart)

SR ST MR MT LR LT XR XT

FEATURES AND BENEFITS

- Regular and tall sizes for premium fit.
- Woven with effective moisture management.
- Durable fabric construction for endurance.
- Comfort wide band for enhanced fit.
- Technically designed patterns with bespoke detail.

BENEFITS OF MERINO WOOL:

- Breathability and moisture management.
- Natural heating and cooling.
- Sweat wicking.
- Strength and resilience.
- Quick drying.
- Padded comfort foot.
- Odour resistance.

LUMBER JACK





LUMBER JACK - GREY



LUMBER JACK - ORIGINAL (RED)



LUMBER JACK - IVORY



LUMBER JACK - BLUE

DESIGN STYLE: LUMBER JACK

INSPIRATION:

Proudly Canadian.

Fabric content:

3% MERINO WOOL 16% ACRYLIC 69% NYLON 12% LYCRA

	ACHI+	DESIGN	LENGTH
CODE:	2	LJ	C
	2	LG	C
	2	LB	C
	2	ILJ	C

20-30 mmHg

Lumber Jack

Calf

SIZE (See Section C for details of your ACHI+ size chart)

SR

ST

MR

MT

LR

LT

XR

XT

FEATURES AND BENEFITS

- Regular and tall sizes for premium fit.
- Woven with effective moisture management.
- Durable fabric construction for endurance.
- Comfort wide band for enhanced fit.

BENEFITS OF MERINO WOOL:

- Breathability and moisture management.
- Natural heating and cooling.
- Sweat wicking.
- Strength and resilience.
- Odour resistance.
- Quick drying.
- Padded comfort foot.
- Merino foot base.
- Nylon lycra leg.

PASTEL PIXEL





DESIGN STYLE: **PASTEL PIXEL**

INSPIRATION:

Soft, subtle, luxurious wool.

Fabric content:

7% MERINO WOOL 31% ACRYLIC 45% NYLON 17% LYCRA

CODE:

ACHI+
2
20-30mmHg

DESIGN
PP
Pastel Pixel

LENGTH
C
Calf

SIZE (See Section C for details of your ACHI+ size chart)

SR **ST** **MR** **MT** **LR** **LT** **XR** **XT**

FEATURES AND BENEFITS

- Regular and tall sizes for premium fit.
- Woven with effective moisture management.
- Durable fabric construction for endurance.
- Comfort wide band for enhanced fit.

BENEFITS OF MERINO WOOL:

- Breathability and moisture management.
- Natural heating and cooling.
- Sweat wicking.
- Strength and resilience.
- Quick drying.
- Padded comfort foot.
- Odour resistance.



SALT AND PEPPA+



DESIGN STYLE: **SALT AND PEPPA +**

INSPIRATION:

Coolin' by day then at night working up a sweat...lol.

Fabric content:

43% COTTON 41% NYLON 16% LYCRA

CODE:

ACHI+

2

20-30mmHg

DESIGN

SP

Salt and Peppa +

LENGTH

C

Calf

SIZE [See Section C for details of your ACHI+ size chart]

SR

ST

MR

MT

LR

LT

XR

XT

FEATURES AND BENEFITS

- Soft cotton fibers provide natural, breathable, hypoallergenic compression.
- Regular and tall sizes for premium fit.
- Durable fabric construction for endurance.
- Comfort wide band for enhanced fit.
- Technically designed patterns with bespoke detail.



STIRR UP



DESIGN STYLE: **STIRR UP**

INSPIRATION:

Stirring it up with a new solution to compression.

Fabric content:

34% NYLON 14% LYCRA 52% COTTON

	ACHI+	DESIGN	LENGTH
CODE:	2	SU	C
	20-30mmHg	Stirr Up	Calf

SIZE (See Section C for details of your ACHI+ size chart)

SR ST MR MT LR LT XR XT

FEATURES AND BENEFITS

- Woven with effective moisture management.
- Regular and tall sizes for premium fit.
- Durable fabric construction for endurance.
- Comfort wide band for enhanced fit.
- Technically designed patterns with bespoke detail.
- Cropped toe and heel to optimize “bare foot” performance or enjoy the best of the season and sport sandals with pride.
- Soft cotton fibers provide natural, breathable, hypoallergenic compression.

SMART N' SLEEK



and *GO* SOCK



NAVY SMART N'SLEEK



GQ BLACK SOCK



GRAPHITE GREY

DESIGN STYLE: **SMART N'SLEEK & GQ**

INSPIRATION:

Dapper sophistication and elegance

Fabric content:

42% COOLMAX 43% NYLON 15% LYCRA

CODE:

ACHI+

2
20-30 mmHg

DESIGN

SSC
Smart n'Sleek

LENGTH

C
Calf

2
20-30 mmHg

GQ
GQ Black Sock

C
Calf

2
20-30 mmHg

GG
Graphite Grey

C
Calf

(See Section C for details of your ACHI+ size chart)

SIZE **SR** **ST** **MR** **MT** **LR** **LT** **XR** **XT**

FEATURES AND BENEFITS

- Regular and tall sizes for premium fit.
- Woven with effective moisture management.
- Durable fabric construction for endurance.
- Comfort wide band for enhanced fit.

BENEFITS OF COOLMAX

- Lightweight.
- Soft on skin.
- Wicks moisture away quickly (keeps your feet dry, feeling cool and fresh, helps prevent odour, prevents the risk of Athlete's foot and blisters).
- Quick drying.
- Durable.



URBANE STRIPE +



DESIGN STYLE: **URBANE STRIPE +**

INSPIRATION:
Keep it Urbane!

Fabric content:
75% NYLON 25% LYCRA

	ACHI+	DESIGN	LENGTH
CODE:	2	US	C
	20-30 mmHg	Urbane Stripe	Calf

SIZE (See Section C for details of your ACHI+ size chart)

SR ST MR MT LR LT XR XT

FEATURES AND BENEFITS

- Woven with effective moisture management.
- Regular and tall sizes for a premium fit.
- Durable fabric construction for endurance.
- Comfort wide band to enhance fit.
- Technically designed patterns with bespoke detail.



PROPEL ELITE+



DESIGN STYLE: **PROPEL ELITE+**

INSPIRATION:
MOVING YOUR PERFORMANCE FORWARD

Fabric content:
76% NYLON 13% LYCRA 11% MICROFIBER

	ACHI+	DESIGN	LENGTH
CODE:	2	PE	C
	20-30 mmHg	Propel Elite	Calf

SIZE (See Section C for details of your ACHI+ size chart)

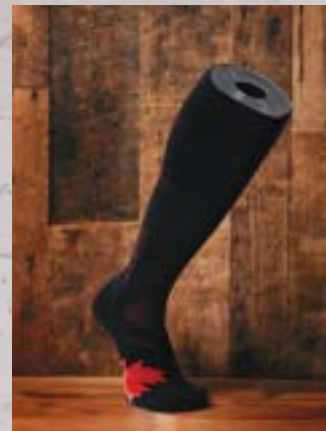
SR ST MR MT LR LT XR XT

FEATURES AND BENEFITS

- Reduces the build up lactic acid and helps muscle recovery
- Provides relief from tired, aching legs
- Helps aid in the prevention of spider veins and swelling
- Ideal for prolonged standing, sitting, and long distance travel.
- Greater endurance by reducing muscle vibration and soreness
- Supreme moisture wicking
- Temperature regulation
- Innovative Ventilation Channels
- Specially designed front and ankle crease
- Achilles and Arch support



STRONG AND FREE+



DESIGN STYLE: **STRONG AND FREE**

INSPIRATION:
Proudly Canadian!

Fabric content:
76% NYLON 13% LYCRA 11% MICROFIBER

	ACHI+	DESIGN	LENGTH
CODE:	2	SF	C
	20-30 mmHg	Strong and Free	Calf

SIZE (See Section C for details of your ACHI+ size chart)

SR ST MR MT LR LT XR XT

FEATURES AND BENEFITS

- Reduces the build up lactic acid and helps muscle recovery
- Provides relief from tired, aching legs
- Helps aid in the prevention of spider veins and swelling
- Ideal for prolonged standing, sitting, and long distance travel
- Greater endurance by reducing muscle vibration and soreness
- Supreme moisture wicking
- Temperature regulation
- Innovative Ventilation Channels
- Specially designed front and ankle crease
- Achilles and Arch support

RETRO RENEGADE





DESIGN STYLE: **RETRO RENEGADE**

INSPIRATION:
Shake your Groove Thang

Fabric content:
75% Nylon 25% Lycra

ACHI+	DESIGN	LENGTH
2	RR	C
20-30 mmHg	Retro Renegade	Calf

SIZE (See Section C for details of your ACHI+ size chart)

SR ST MR MT LR LT XR XT

FEATURES AND BENEFITS

- Woven with effective moisture management
- Regular and Tall sizes for premium fit
- Durable fabric construction for endurance
- Comfort wide band to enhance fit
- Technically designed patterns with bespoke detail



Frequently Asked Questions

Q: How long do ACHI / ACHI+ compression socks last and how do I wash them?

A: ACHI / ACHI+ compression socks last for approximately 6 months wearing them every day. Take care of your socks, gently wash with mild detergent. HANG to dry!

Q: How do ACHI / ACHI+ compression socks work?

A: Graduated compression socks deliver a controlled amount of pressure which is greatest at the ankle and gradually decreases towards the top of the sock. This promotes better blood flow against gravity and assists in the prevention of swelling and varicose veins. ACHI/ACHI+ acts like a layer of muscle, gently squeezing stretched vein walls and helping muscles regenerate more efficiently. This helps remove lactic acid and improves circulation.

Q: Are ACHI+ 20-30mmHG compression socks covered by extended health care plans?

A: Yes, many extended health care plans cover for medical compression. Ask your Client/Patient to review their coverage requirements. ACHI 15-22mmHG can sometimes be recognized as preventative treatment under some extended health care plans, always check with the insurance provider.

Q: How are ACHI / ACHI+ graduated compression socks different than regular socks?

A: ACHI / ACHI+ compression socks are backed by 20+ years of medical compression experience and apply the latest innovations in sock technology. We only use superior yarns to meet our meticulous quality and medical efficacy. ACHI / ACHI+ socks are a medical device manufactured in conformity with ISO 9001 and ISO 13485 assurance certificates. Bespoke design with a premium fit and function!

Q: Are compression socks tight and how do they feel?

A: Yes, they are comfortably tight! The ACHI / ACHI+ socks provide graduated compression from the ankle area to below the bend in the knee. This design allows the ACHI / ACHI+ socks to function like a massage up the leg while pumping and circulating the blood towards the heart. ACHI / ACHI+ socks provide relief against gravity!

When do I wear ACHI / ACHI+ compression socks?



Return Policy: No products may be returned unless manufacturer's defect. Please refer to our website.

Do you have any more questions?
www.lunatikathletiks.com



ANKLE CIRCUMFERENCE
19 cm



CALF CIRCUMFERENCE
36 cm



LEG LENGTH
42 cm



SHOE SIZE



PROPER FIT

HOW TO FIT FOR ACHI / ACHI+ COMPRESSION SOCKS

1. Record Clients shoe size. Have your client in a seated position with their legs at 90°. Measure the ankle circumference above the malleolus (ankle bone). Record measurement.
2. Follow the same method for the calf circumference measurement. Ensure you take the calf measurement at the fullest circumference. Record measurement.
3. For ACHI + 20-30 mmHg take the lateral (outside) length measurement from the floor to the bend of the knee. The tape measure must be vertical in a straight line. Record measurement.
This will determine if your client is a REGULAR or TALL length.
4. Follow left to right on the ACHI / ACHI+ sizing chart to determine your clients size.
5. The ACHI / ACHI+ socks fit two finger widths below the bend in the knee.

ACHI	SHOE SIZE		CIRCUMFERENCE GUIDELINE			ACHI+
SIZE	US SHOE SIZE		ANKLE	CALF	CALF LENGTH	SIZE/ CODE
	WOMEN	MEN				
SMALL	5-7	6	7" - 8 3/4" [18 - 22CM]	11" - 15" [28 CM-38 CM]	<16" [41cm]	SR
					>16" 1/4 [41.5cm]	ST
MEDIUM	7.5-9	6.5-8	9" - 9 3/4" [22.5 - 25CM]	13" - 17" [33 CM-43 CM]	<16" [41cm]	MR
LARGE	9.5-11	8.5-10	10" - 10 3/4" [25.5 - 27.5 CM]	15" - 19" [39 CM - 48 CM]	>16" 1/4 [41.5cm]	MT
					<16" [41cm]	LR
X-LARGE	11.5+	10.5+	11" - 11 3/4" [28CM-31 CM]	17" - 21" [43 CM-54 CM]	>16" 1/4 [41.5cm]	LT
					<16" [41cm]	XR
					>16" 1/4 [41.5cm]	XT

ACHI+
2
20-30mmHg

DESIGN
RD
Rockin Dot

LENGTH
C
Calf

SIZE
ST
Small Tall

ACHI						
SHOE SIZE		CIRCUMFERENCE GUIDELINE				ACHI+
SIZE	US SHOE SIZE		ANKLE	CALF	CALF LENGTH	SIZE/ CODE
	WOMEN	MEN				
SMALL	5-7	6	7" - 8 3/4" (18 - 22CM)	11" - 15" (28 CM-38 CM)	<16" (41cm)	SR
					>16" 1/4 (41.5cm)	ST
MEDIUM	7.5-9	6.5-8	9" - 9 3/4" (22.5 - 25CM)	13" - 17" (33 CM-43 CM)	<16" (41cm)	MR
					>16" 1/4 (41.5cm)	MT
LARGE	9.5-11	8.5-10	10" - 10 3/4" (25.5-27.5 CM)	15" - 19" (39 CM -48 CM)	<16" (41cm)	LR
					>16" 1/4 (41.5cm)	LT
X-LARGE	11.5+	10.5+	11" - 11 3/4" (28CM-31 CM)	17" - 21" (43 CM-54 CM)	<16" (41cm)	XR
					>16" 1/4 (41.5cm)	XT

*Sizing Wizard
available online!*



ACHI TECH is our line of compression wear to meet your everyday needs. Doms Tech and Stride Wave Non-medical compression leggings have been designed with you in mind. For that fabulous active look, throw on your ACHI TECH leggings. You can hit the office and gym without a double take. Durable fabric, gusseted groin area for comfort and the perfect all over compression to hold everything in nicely without feeling constrained. Ready for work, gym, yoga, errands and anything life may toss your way. We know recovery is an important part of your fitness routine. A quick recovery means you feel great, you can work out more often and get better results. Why not feel great all day, while looking fabulous and taking care of yourself too!



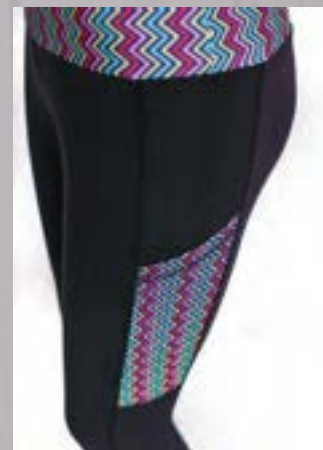




ACHI	NATURAL WAIST WOMEN'S	HIP	NATURAL WAIST MEN'S
SIZE			
XS	26" - 34"	36"	-----
S	28" - 36"	38"	28" - 30"
M	30" - 38"	40"	32" - 34"
L	32" - 40"	42"	36" - 38"
XL	34" - 42"	46"	40" - 42"
2X	36" - 44"	50"	44" - 46"
3X	38" - 46"	56"	48" - 50"
4X	40" - 48"	60"	-----

STRIDE WAVE





DESIGN STYLE: **STRIDE WAVE**

INSPIRATION:

Ride the wave of the perfect stride.

Fabric content:

88% POLYESTER 12%SPANDEX

	ACHI	DESIGN	LENGTH
CODE:	0	SW	F
		Stride Wave	Full

SIZE (See Section D for details of your ACHI size chart)

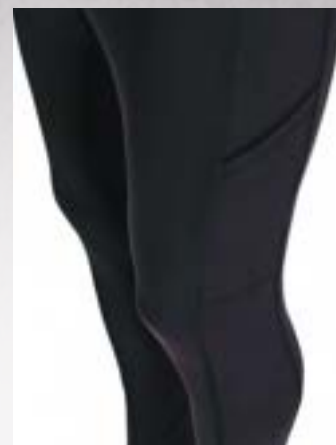
XS S M L XL 2X 3X 4X

FEATURES AND BENEFITS

- Reduces the build up of lactic acid and helps muscle recovery.
- Provides relief from tired, achy legs.
- Greater endurance by reducing muscle vibration and soreness.
- Ideal for working out, prolonged standing, sitting, or long distance travel.
- Fashionable for everyday use.
- Thick high hide compression fabric.
- Crotch gusset for extra room and strength.
- High rise waistband that is comfortable and stays in place.
- Soft comfy feel with good abrasion resistance and moisture wicking.



DOMS TECH SHE



DESIGN STYLE: **DOMS TECH SHE**

INSPIRATION:

Technology for Delayed Onset Muscle Soreness.

Fabric content:

88% POLYESTER 12%SPANDEX

	ACHI	DESIGN	LENGTH
CODE:	0	DTS	F
		Doms Tech She	Full

SIZE (See Section D for details of your ACHI size chart)

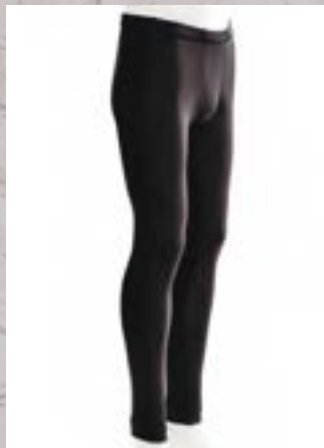
XS S M L XL 2X 3X 4X

FEATURES AND BENEFITS

- Reduces the build up of lactic acid and helps muscle recovery.
- Provides relief from tired, achy legs.
- Greater endurance by reducing muscle vibration and soreness.
- Ideal for working out, prolonged standing, sitting, or long distance travel.
- Fashionable for everyday use.
- Thick high hide compression fabric.
- Crotch gusset for extra room and strength.
- High rise waistband that is comfortable and stays in place.
- Soft Comfy feel with good abrasion resistance and moisture wicking.



DOMS TECH HE



DESIGN STYLE: **DOMS TECH HE**

INSPIRATION:
Technology for **Delayed Onsset **Muscle Soreness**.**

Fabric content:
88% POLYESTER 12%SPANDEX

	ACHI	DESIGN	LENGTH
CODE:	0	DTH	F
		Doms Tech He	Calf

SIZE (See Section D for details of your ACHI size chart)

S M L XL

FEATURES AND BENEFITS

- Reduces the build up of lactic acid and helps muscle recovery.
- Provides relief from tired, achy legs.
- Greater endurance by reducing muscle vibration and soreness.
- Ideal for working out, prolonged standing, sitting, or long distance travel.
- Thick high hide compression fabric.
- Crotch gusset for extra room and strength.
- Soft Comfy feel with good abrasion resistance and moisture wicking.





WELLNESSES





EMS TENS SYSTEM

INCLUDED WITH THIS SYSTEM:

- 1 x EMS/TENS Unit
- 2 x Large Pads
- 2 x Small Pads
- 2 x Electric Wires (1/2 wire)
- 1 x Holder for Pads and Wires
- 1 x USB Cable
- 1 x Adapter
- 1 x Acupuncture Point Chart
- 1 x Instruction Manual

Large size replacement pads for use with the ACHI Wellness EMS/TENS Pain Therapy System are also available in a pack of 2.

FEATURES AND BENEFITS

- 2 output with 6 modes
- 10 level intensity
- 20 minute default timer, can be adjusted from 10-60 minutes
- Rechargeable lithium battery
- Battery indicator displays when the battery will need to be recharged
- AC adapter 100-240V, USB Charger 5V



EMS FOOT PAD SYSTEM

INCLUDED WITH THIS SYSTEM:

- 1 X EMS/TENS Foot Mat (foldable)
- 1 X Snap on EMS/TENS device (USB rechargeable)
- 1 x USB Cable

This is the perfect companion for the EMS TENS unit by ACHI Wellness.

This device works well with compression therapy or as a stand-alone therapy for special situations. Do you have a client that is out of the size range for compression? Try the EMS Foot Pad system, using this therapy even once a day can provide results! Do you have a client that has limited dexterity? Sometimes its difficult to pull on and apply compression socks. The EMS Foot Pad Unit can mimic the foot pump system and help increase circulation ~ its just that easy. (Please consult the contraindications of use as an EMS/TENS device for each individual client).

FEATURES AND BENEFITS

- Foldable & Comfortable foot mat
- 6 selectable modes
- 10 levels of intensity
- 15 minute auto run as one session
- Mat size 310mm (L) x 300mm (W)
- Affordable, portable and easy to use
- Compatible with the ACHI EMS/TENS unit for more options of therapy
- Fold unit in half and take it on your travel to alleviate lower limb aching & swelling.



FOOT ROLLER

FEATURES AND BENEFITS

- Gently contours and applies a steady pressure when rolled under the foot.
- Provides a customized stretch depending on the tension applied.
- Helps relieve muscle tension and foot pain
- Increases blood circulation
- Can help relieve swelling
- Help alleviate the symptoms of plantar fasciitis
- Light, compact and easy to use
- You can use it anywhere/anytime

FOOT ROCKER

FEATURES AND BENEFITS

- Ease into a supreme lower limb/calf stretch
- Relieve and Prevent: Achilles Tendonitis, Heel Pain, Plantar Fasciitis, Tight Calves/Hamstrings and more
- Portable, Light and easily set up and use almost anywhere/anytime
- Features slip resistance pads
- Has a back heel plate
- Biomechanically Engineered design
- Has an optimal stretching angle





ACUPUNCTURE PEN

INCLUDED WITH THIS SYSTEM:

- 1 x AcuPen (WochuanMeridian Energy Massage Pen) USB Rechargeable
- 5 x Massage tips (4 interchangeable ~ Node point massage tip is built on)
- 1 x USB cable
- 1 x booklet with therapy point charts

HELPS WITH THE FOLLOWING CONDITIONS:

- Acute & Chronic Pain
- Arthritis
- Rheumatism
- Osteoporosis
- Sciatica
- Spondylitis
- Migraines
- Sports Injuries
- Muscle & Joint Pain
- Fibromyalgia
- Premature Aging
- Stress
- Fatigue
- And more!

FEATURES AND BENEFITS

- Uses gentle electric pulses that penetrate stiff and frozen muscles, releasing tension while also relieving pain and decreasing inflammation
- Causes muscles to contract and release which helps to improve circulation.
- Can be easily adjusted from 1-9 levels, 9 being the strongest. Higher levels are often needed for larger joints and muscles. Pro Tip- always start with the lowest level and work your way up.
- Performs alternating deep and shallow pulse massage
- Less skin irritation in comparison to needle acupuncture
- Easy to use, can be used almost anywhere, travels well.



BACK STRETCHER

FEATURES AND BENEFITS

- Product adjust to 3 levels of arch for customized stretch/support
- Conveniently use on a flat surface for lower back stretch/decompression or add to the back of a seat for optimum lower lumbar support while seated
- Travels well, can be used almost anywhere/anytime
- Equipped with 10 magnet and massage knobs to match your body points.
- Can be used to help you relax and relieve body/lower back pain & tension
- Centre foam strip for added comfort
- Compact and easy to use



HOT PAIN RELIEVING PATCHES

ACTIVE INGREDIENTS

- Capsicum Extract (3.89%)
- Menthol (8.2%)
- Belladonna Extract (2.5%)
- Camphor (9.6%)

Purchase these fabulous Hot Pain Relieving Patches in packages of 3, 5, or 20.

Each patch measures 12 x 18cm and can be cut to custom sizing for your needs (we suggest cutting patches into 1/4 for convenience).

FEATURES AND BENEFITS

- For fast relief of minor aches & pains
- Powerful pain relief
- Penetrating muscle relaxation
- Not messy or greasy
- Can be worn day or night
- Will not stain clothing
- Discreet, can be applied and worn under clothing



159 Anne St. South
Unit A
Barrie, ON
L4N 2E4
CANADA

phone: 705 881 1412
toll free: 1 844 777 8884
info@lunatikathletiks.com

www.lunatikathletiks.com

